



India Meteorological Department
(Ministry of Earth Sciences)

BULLETIN NO. : 07 (BOB/08/2022)

TIME OF ISSUE: 1200 HOURS IST

DATED: 12.09.2022

FROM: INDIA METEOROLOGICAL DEPARTMENT (FAX NO. 24643965/24699216/24623220)

TO: CONTROL ROOM, NDM, MINISTRY OF HOME AFFAIRS (FAX.NO. 23093750)
CONTROL ROOM NDMA (FAX.NO. 26701729)
CABINET SECRETARIAT (FAX.NO.23012284, 23018638)
PS TO HON'BLE MINISTER FOR S & T AND EARTH SCIENCES (FAX NO.23316745)
SECRETARY, MOES (FAX NO. 24629777)
H.Q. (INTEGRATED DEFENCE STAFF AND CDS) (FAX NO. 23005137/23005147)
DIRECTOR GENERAL, DOORDARSHAN (23385843)
DIRECTOR GENERAL, AIR (23421105, 23421219)
PIB MOES (FAX NO. 23389042)
UNI (FAX NO. 23355841)
D.G. NATIONAL DISASTER RESPONSE FORCE (NDRF) (FAX NO. 26105912, 2436 3260)
DIRECTOR, PUNCTUALITY, INDIAN RAILWAYS (FAX NO. 23388503)
CHIEF SECRETARY, ODISHA (FAX NO. 0674-2536660)
CHIEF SECRETARY, ANDHRA PRADESH (FAX NO. 0863-2441029, 08645-246600)
CHIEF SECRETARY, WEST BENGAL (FAX NO. 033-22144328)
CHIEF SECRETARY, CHATTISGARH (FAX NO. 771-2221206)
CHIEF SECRETARY, GOVT. OF MADHYA PRADESH (FAX NO. 755-2441076)
CHIEF SECRETARY, GOVT. OF MAHARASHTRA (FAX NO. 022- 22028594)

Sub: Depression weakened into a well marked low pressure area over southeast Madhya Pradesh & neighbourhood

The Depression over south Chhattisgarh and adjoining southeast Madhya Pradesh & Vidarbha moved nearly northwestwards and weakened into a well marked low pressure area at 0830 hrs IST of 12th September 2022 over southeast Madhya Pradesh & neighbourhood.

It is likely to move nearly northwestwards across Madhya Pradesh during next 48 hours.

Warnings:

(i) Rainfall (Warning Graphics enclosed)

12th September: Rainfall at most places with **heavy to very heavy rainfall** at isolated places is very likely over East Madhya Pradesh, Vidarbha & Madhya Maharashtra and **heavy rainfall** at isolated places is very likely over Chhattisgarh, Odisha & West Madhya Pradesh.

13th September: Rainfall at most places with **heavy to very heavy rainfall** at isolated places is likely over Madhya Pradesh & Madhya Maharashtra and **heavy rainfall** at isolated places is likely over Chhattisgarh, Vidarbha and Odisha.

14th September: Rainfall at most places with **heavy to very heavy rainfall** at isolated places is likely over West Madhya Pradesh & Madhya Maharashtra and **heavy rainfall** at isolated places is likely over East Madhya Pradesh and Odisha.

(ii) Wind warning

- Squally weather (wind speed reaching 40-50 kmph gusting to 60 kmph) are very likely to prevail over northwest & westcentral Bay of Bengal and along & off North Andhra Pradesh, Odisha & West Bengal coasts on 12th September and off North Andhra Pradesh & Odisha coasts on 13th September, 2022.

(iii) Sea condition

- Sea condition will be rough to very rough over northwest & westcentral Bay of Bengal and along & off Andhra Pradesh, Odisha & West Bengal coasts on 12th September and off North Andhra Pradesh & Odisha coasts on 13th September, 2022.

(iv) Fishermen Warning (for graphics visit <https://rsmcnewdelhi.imd.gov.in>)

- Fishermen are advised not to venture into northwest & westcentral Bay of Bengal and along & off Andhra Pradesh, Odisha & West Bengal coasts on 12th September and off North Andhra Pradesh & Odisha coasts on 13th September, 2022.

This is the last update in association with this system. However, the system will be under continuous surveillance and regular bulletins shall be issued by National Weather Forecasting Centre, New Delhi and concerned Meteorological Centres of IMD.

(A.K. Das)
Scientist-E,
Cyclone Warning Division

Copy to: ACWC Kolkata/ ACWC Chennai/ CWC Bhubaneswarr//CWC Visakhapatnam/MC Amravati/ MC Bhopal



OBSERVED TRACK OF DEPRESSION NOW LIES AS WELL MARKED LOW PRESSURE AREA OVER SOUTHEAST MADHYA PRADESH AND NEIGHBOURHOOD BASED ON 0300 UTC OF 12th SEPTEMBER, 2022

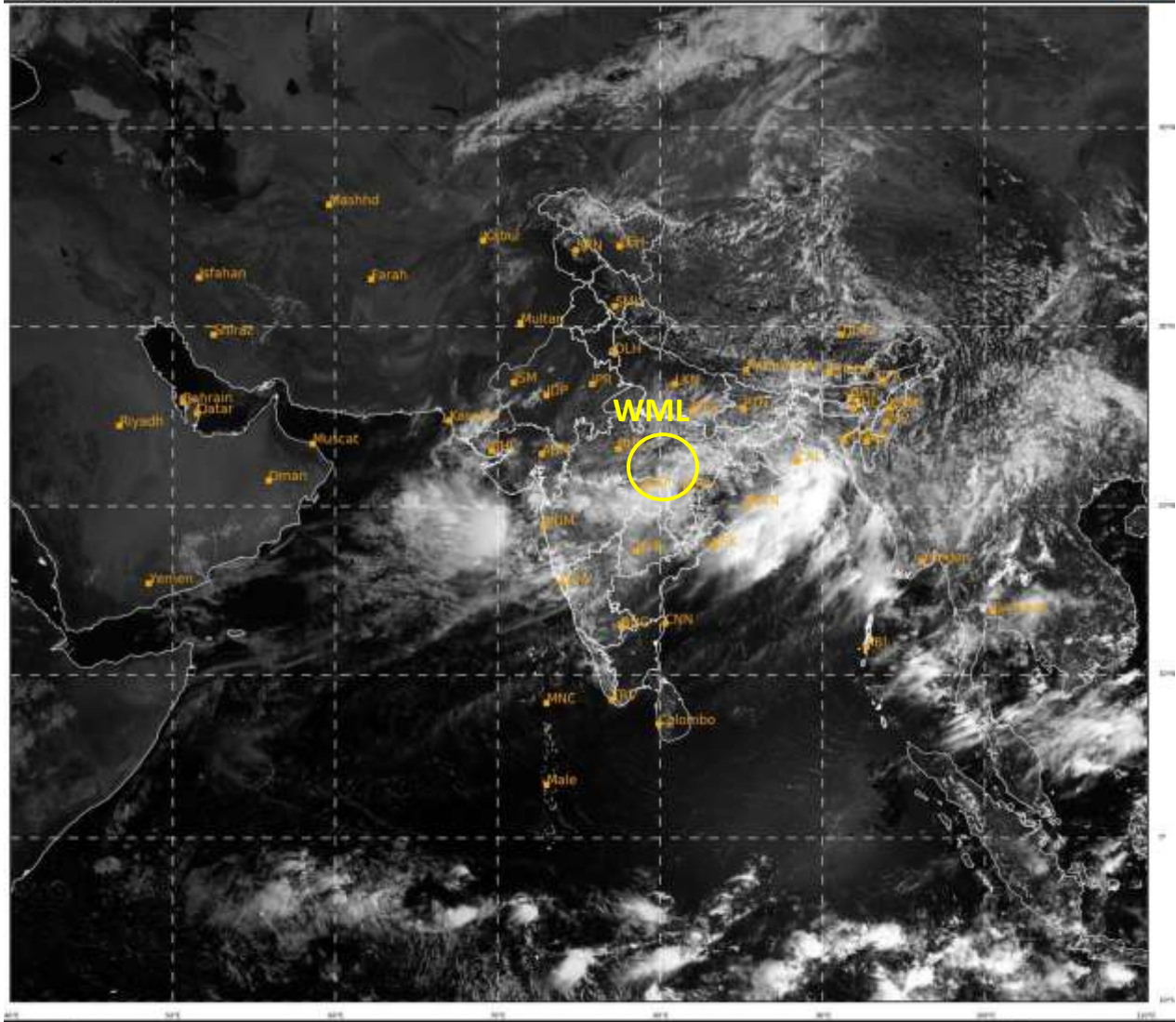


DATE/TIME IN UTC
 IST=UTC + 0530
 L: LOW PRESSURE AREA
 WML: WELL MARKED LOW PRESSURE AREA
 D: DEPRESSION (17-27 KT)
 DD: DEEP DEPRESSION (28-33 KT)
 CS: CYCLONIC STORM (34-47 KT)
 SCS: SEVERE CYCLONIC STORM (48-63KT)
 VSCS: VERY SEVERE CYCLONIC STORM (64-89 KT)
 ESCS: EXTREMELY SEVERE CYCLONIC STORM (90-119 KT)
 SuCS: SUPER CYCLONIC STORM (≥ 120 KT)

- LESS THAN 34 KT
- 34-47 KT
- ≥ 48 KT
- OBSERVED TRACK
- FORECAST TRACK
- CONE OF UNCERTAINTY

SAT : INSAT-3DR IMG
Visible Count 0.65 um
LIC Mercator

12-09-2022/(0445 to 0512) GMT
12-09-2022/(1015 to 1042) IST



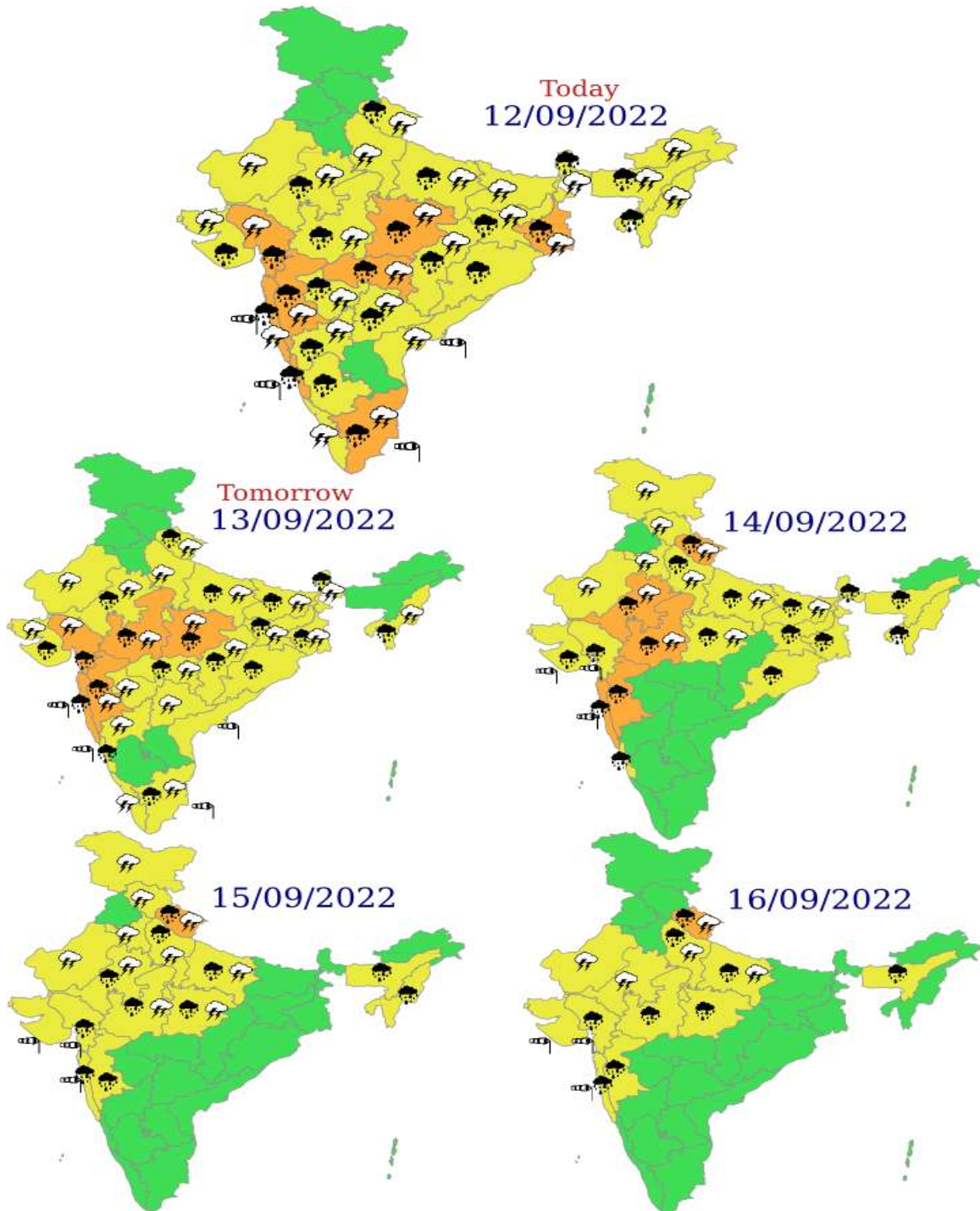
30

661

IMD, DELHI

WML: WELL MARKED LOW PRESSURE AREA

Weather Warning Graphics



 Heavy Rain
 Strong Winds

WARNING
WARNING (TAKE ACTION)
ALERT (BE PREPARED)
WATCH (BE UPDATED)
NO WARNING (NO ACTION)